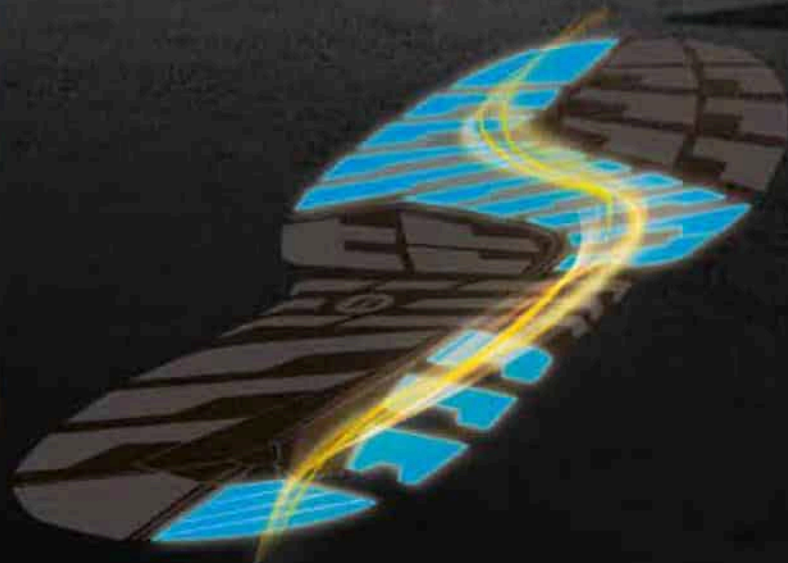


BATA **INDUSTRIALS** **CATALOG** **2024**



BATA INDUSTRIALS
THE SAFETY SHOE

SERIOUSLY.

The solo of Bata

Established in a small town in Czechoslovakia in 1894, Bata experienced rapid growth thanks to its founder, Thomas Bata. Under his guidance and vision, the small family business successfully expanded into a large-scale shoe manufacturer. Following his principles, the company continued its upward trajectory and grew into an international business and formed a prominent global footprint by the end of the twentieth century. Today, Bata is recognised as an iconic brand and a market leader in the modern footwear industry serving a million customers in over 60 countries every day.



**'DEAR FEET,
LET'S TALK
ABOUT
SAFETY.'**



BATA INDUSTRIALS CATALOGUE
THE SAFETY SHOE



BATA INDUSTRIALS

THE SAFETY SHOE

CONSTRUCTION



LOGISTICS



LIGHT INDUSTRIAL



HEAVY INDUSTRIAL



AGRICULTURE



AUTOMOTIVE



811-6168



MENS COMFIT BATA

Supplier : Singapore

Description:

Flexible

Worth

Foam Insole

821-6168

MENS COMFIT BATA

Supplier : Singapore

Description:

Flexible

Worth

Foam Insole





821-6152

MENS COMFIT BATA

Supplier : Singapore

Description:

Flexible

Worth

811-6213

MENS COMFIT BATA

Supplier : Singapore

Description:

Flexible

Worth



821-6213

MENS COMFIT BATA

Supplier : Singapore

Description:

Flexible

Worth



611-6235



WOMEN BALLERINA

Supplier : Singapore

Description:

Ballerina with
Medium Heel

511 - 6075

WOMEN BALLERINA

Supplier : Singapore

Description:

PU upper

Water Resistant

Anti - Slippery



611-6124



WOMEN BALLERINA

Supplier : Singapore

Description:

Ballerina with
Medium Heel

611-6123

WOMEN BALLERINA

Supplier : Singapore

Description:

PU upper

Water Resistant

Anti - Slippery



511-6339



WOMEN BALLERINA

Supplier : Singapore

Description:

Ballerina with
Heel



DB.01. COLLECTION

Seriously stylish. Seriously comfortable.

The first series of the DB.01. collection consists of three work sneakers in black, white and black and white. This stylishly designed safety sneaker collection is designed by the Dutch top designer Dyanne Beekman (DB). Each of models are eye-catchers under any business outfit. The sneaker is feather light and offers excellent support and comfort for good stability. It has high-quality grip and slip resistance, even above

the European safety standard. The sneaker is antibacterial and washable for maximum hygiene. The three models do not have a safety toe cap and are particularly suitable for workers in the hospitality, cleaning and hairdressing industries. Here there are no mechanical risks due to bumps or pressure. With these safety shoes, the emphasis is mainly on light weight, excellent grip and fit. The shoes are available for women and men.



711-10698

Supplier : Netherlands

Description:

Microfiber upper

Mesh lining

Rubber outsole

711-60693

Supplier : Netherlands

Description:

Microfiber upper

Mesh lining

Rubber outsole





SPORTMATES® COLLECTION

Seriously safe. Seriously sporty.

"Ultimate protection in a sporty style."

709-66414

VIVID S1P

Description :

Microfiber/mesh/PU non-stitching upper
FlexGuard® composite penetration
resistant insert
Composite toecap
Mesh lining
EVA/rubber so



709-66414

FIRM S3

Description :

Microfiber/mesh/PU
non-stitching upper
FlexGuard® composite
penetration resistant insert
Composite toecap
Mesh lining
EVA/rubber sole



709-96416

DRIVE IN

Supplier : Netherlands

Description : Drive in
Microfiber/mesh/PU
non-stitching upper
FlexGuard® composite penetration
resistant insert
Composite toecap
Mesh lining
EVA/rubber sole



709-66414

IRON S3

Description :
Microfiber/mesh/PU
non-stitching upper
FlexGuard® composite
penetration resistant insert
Composite toecap
Mesh lining
EVA/rubber sole



805-6637

Memphis

BOOT MENS

Description :

Steel cap

Slip Resistant

Oil Resistant

Light weight



709-66414

Induna

Description :

Steel cap

Slip Resistant

Oil Resistant

Light weight



ENGINEERED **FOR** **SAFETY AND DEEP** **COMFORT.**

70561513

Supplier : Singapore

Description:

Oil resistant

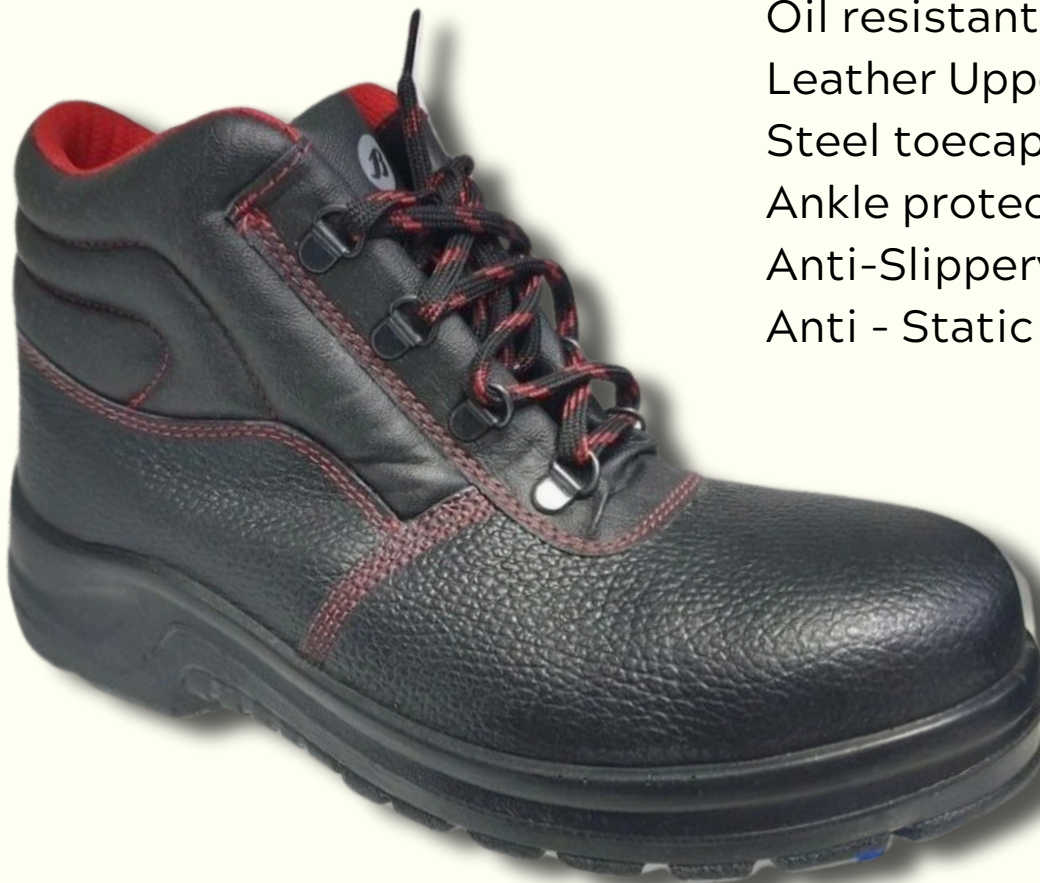
Leather Upper

Steel toecap

Ankle protection

Anti-Slippery

Anti - Static



HIGH QUALITY SAFETY SHOES FOR A
FAIR PRICE AND PRODUCE BY THE
WORLD'S LARGEST SHOMAKER, WE
AIM FOR NOTHING BEST THAN THE
BEST.



1.SLIP RESISTANCE
MULTI-DIRECTIONAL
SLIP RESISTANCE. ADDED GRIP
AT TOE OFF.

2.CHANNELING FOR IMPROVED LIQUID
DISPERSAL

4. DUAL DENSITY PU SOLE LIGHTER
DENSITY PU MIDSOLE FOR IMPACT
ABSORPTION & CUSHIONING. HEAVIER
DENSITY PU OUTSOLE FOR DURABILITY
IN WORKING ENVIRONMENTS.

4. GRIP LARGE PROFILE BLOCKS AND DEEP
CLEATS FOR EXTRA GRIP AND STABILITY

5. TUNNELSYSTEM* SHOCK ABSORPTION





PULL-ON LUGS

LINING TO ABSORB
PERSPIRATION

EXTRA THICK FOR
SHIN PROTECTION

KICK-OF LUG
WITH EXTRA
HEEL & ANKLE
PROTECTION

STEEL TOE CAP

EXTRA TOE
PROTECTION

PERSPIRATION
ABSORBENT INSOLE

THICK ABRASION, OIL, ACID AND SLIP
RESISTANT ULTRAGRIP SOLE



872-6626

Jobber Mule

Slip Resistant
Water Resistant



897-6619

Rhino 2

Description :
Steel cap
Slip Resistant
Oil Resistant

PVC BOOTS COLLECTION

WORKMASTER II ARE S5 CERTIFIED SAFETY BOOTS, INCLUDING STEEL TOE CAPS, STEEL PENETRATION RESISTANT INSERTS AND SRA CERTIFIED PVC SOLES. THEY ALSO FEATURE REINFORCEMENT AT THE HEEL, ANKLE AND SHIN.

OUR GUMBOOTS ARE MADE OF PVC THAT IS FORMULATED TO MEET THE CORRECT APPLICATION ACROSS A WIDE RANGE OF INDUSTRIES.

WORKMASTER II GUMBOOTS ARE THE BEST CHOICE WHEN YOU ARE LOOKING FOR HIGH PERFORMANCE, PREMIUM QUALITY AND LASTING DURABILITY.

WORKMASTER II Ref. 72260100

Supplier : Singapore

Description:

Steel penetration resistant insert

Polyester lining

Steel toecap

Anti-slippery

Anti-static

PVC sole



Seriously IMPROVING Working LIVES.

At Bata Industrials we believe that people work at their best when they are better equipped and protected

We improve their working lives by delivering the highest quality safety footwear, designed to meet the demands of hard working people wherever they are in the world.

Through our continuous innovation processes we develop new features and designs which contribute to safety, comfort, safety durability and quality

ASH GUMBOOT
Ref. 70260542

Supplier : Singapore

Description:

- PVC sole
- Anti-slippery
- Polyester lining
- Steel penetration resistant insert
- Reinforced rubber toecap





TRANSPORT & Light INDUSTRY

Oxford Shoes

Ref: 71560471



- Leather Upper
- Anti-Static
- Anti-Slippery
- Oil resistant



OCCUPATIONAL COLLECTION

714-60631

Supplier : Netherlands

Description : Charge



714-60631

Supplier : Netherlands

Description : Charge white



OUR PARTNERS





BATA INDUSTRIALS

THE SAFETY SHOE

2 ,ROYAL ROAD COROMANDEL | 54462205



BATA INDUSTRIALS
THE SAFETY SHOE

COMPANY PROFILE AND CREDIT APPLICATION

PERSONAL INFORMATION

Reference No : _____

Company Name : _____
(PLEASE USE CAPITAL) _____

Business Activity : _____

Vat No : _____ BRN : _____

Invoice Address : _____

Delivery Address : _____

Phone Number : _____ E-Mail : _____

CONTACT PERSON

Contact Name : _____ Office Number : _____

Job Title : _____ Mobile Number : _____

E-Mail : _____

CREDIT REQUEST

Credit Limit : _____ Credit Period : _____

Completed By : _____ Approved By : _____

Name : _____ Name : _____

OFFICE USE ONLY

Date Entered : _____ Director's Signature : _____

Approve by : _____ Name : _____



BATA INDUSTRIALS
THE SAFETY SHOE

PRICE LIST

Supplier	Name	Category	Gender	Description	Catalog Index	Wholesale Price Excl VAT	Retail Price Incl VAT
Netherlands	705-61513	SAFETY	MEN	Sabre High Cut Safety Shoes		1150	1799
Singapore	811-6168	PROFESSIONAL	MEN	Mens Bata Flexible Worth Foam Insole		2100	2499
Singapore	821-6168	PROFESSIONAL	MEN	Mens Bata Comfit		2100	2499
Singapore	611-6235	PROFESSIONAL	LADY	Ballerina with Medium Heel		1250	1499
Netherlands	711-10698	PROFESSIONAL	MEN	DB01-03 sneaker low white		2450	3499
Netherlands	711-60693	PROFESSIONAL	MEN	DB01-04 sneaker low black		2450	3499
Netherlands	709-96416	SAFETY	MEN	Drive In		2450	3499
Netherlands	719-66413	SAFETY	MEN	Firm		2450	3499
Netherlands	709-66414	SAFETY	MEN	Iron		2450	3499
Netherlands	719-96415	SAFETY	MEN	Vivid		2350	3299
Netherlands	714-60631	SAFETY	UNISEX	Charge		2100	2499
Netherlands	714-60631	SAFETY	UNISEX	Charge White		2100	2499
Singapore	821-6152	PROFESSIONAL	MEN	BATA Comfit Men Lace Up Dress Shoes		2100	2499
Singapore	811-6213	PROFESSIONAL	MEN	BATA Comfit Men Dress Shoes		2100	2499
Singapore	821-6213	PROFESSIONAL	MEN	BATA Comfit Men Dress Shoes		2100	2499
Singapore	511-6075	PROFESSIONAL	LADY	Comfit Women Ballerinas		1250	1499
Singapore	611-6123	PROFESSIONAL	LADY	Women Pumps		1250	1499
Singapore	511-6339	PROFESSIONAL	LADY	Comfit Women Ballerinas		1250	1499
Singapore	611-6124	PROFESSIONAL	LADY	Comfit Women Ballerinas		1250	1499
Netherland	70260542	SAFETY	MEN	Ash Gumboot		510	699
Netherland	72260100	SAFETY	MEN	Workmaster		670	899
South Africa	884-6613	PROFESSIONAL	MEN	Clerk		590	899
Netherland	71560471	PROFESSIONAL	MEN	Oxford		1250	1999
South Africa	805-6637	SAFETY	MEN	Memphis		1200	1999
South Africa	805-6633	SAFETY	MEN	Induna		1400	2299
South Africa	892-6619	SAFETY	MEN	Rhino 2		750	1199
South Africa	872-6626	SAFETY	MEN	Jobber Mule		600	999



TEST REPORT

MAURITIUS STANDARDS BUREAU
VILLA ROAD - MOKA
REPUBLIC OF MAURITIUS

Tel: (230) 433 3648
FAX: (230) 433 5051 / (230) 433 5150
E-mail: msb@intnet.mu
Website: http://msb.intnet.mu

Page 1 of 1 pages

Mr. Kenneth Lam
Fit In Shoe Co Ltd
2, Royal Road
Coromandel

Job Code No.: FI/19-20/32/0827
Date of receiving test items: 2020-02-07
Date of testing: 2020-03-17
Your Ref: N/A
Our Ref: MSB/FIB/TR
Date: 2020-05-25

This report relates only to the specific item(s) tested as identified herein and is issued subject to the conditions printed on the back of this page.

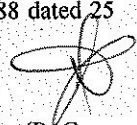
FIBRE TECHNOLOGY LABORATORY

Re: Your test request dated 07 February 2020

Test Item : One pair of black leather safety footwear referenced as "Ref - 705-61513" by client; (FI 0827)
Submitted by : Fit In Shoe Co Ltd on 07 February 2020.
Test performed : Impact Resistance (ISO 20345: 2011)
Test Result : Sample passes the test. (Refer to table below)

Sample Reference	705-61513		
Impact Resistance(200 Joules)	Clearance(mm)	Right	21.6
		Left	21.9
	Minimum clearance Requirement(mm)	14.0	

Note: (i) Test results relate only to samples tested.
(ii) Sample was subcontracted and result is extracted from Test Report No. MUST20001288 dated 25 May 2020.


(R. Gunnoo)
Manager
For Acting Director

END OF TEST REPORT

This is a test report and must not be used for advertisement.

Approved by Quality Manager

Issued : February 2018

QF 021



BATA INDUSTRIALS

THE SAFETY SHOE

1 Introduction to Safety Shoe

Types of Safety shoes e.g steel toe, composite-toe, electrical hazard, slip-resistant

2 Understanding Safety Standards

Explain Certification Marks found on safety shoes, provide details relevant safety standards

3 Product Knowledge

Outline the materials used (leather, synthetic, water proofing, anti fatigue soles)

4 Selling Points and Features

Explain toe protection, sole resistance

5 Sales Techniques

Upselling and cross selling encourage of products like socks, insoles and shoe care items

6 Maintenance and Care

Care Instructions provide information on how to maintain and extend the life of safety shoes. Aftersales support discuss warranty, returns.

Template Mail

Dear Sir/Madam,

I hope this email finds you well.

My name is Kamini Chevathyan, and I am reaching out to introduce myself as the Marketing Officer at Fit' in Shoe. Our company specializes in providing high-quality footwear designed for comfort and style.

I am pleased to present our latest collection of Bata shoes, which combines exceptional quality with contemporary style. We believe our range offers something for every customer and would be an excellent addition to your selection.

To provide you with a comprehensive overview of our offerings, I would like to request an appointment at your earliest convenience with our Sales and Marketing, Mr Michael. During this meeting, we can discuss the features, benefits, and competitive pricing of our Bata shoes, as well as explore how they can meet your needs and exceed your expectations. Please let me know a time that works best for you, and I will ensure to accommodate accordingly.

Thank you for considering this opportunity. I look forward to the possibility of working together and am excited to share what Bata has to offer.

Thank you for considering my request. I look forward to your confirmation.

Kamini Chevathyan

Marketing Officer

Fit'In Shoe Co (Mtius)Ltd

Script On Phone

Bonjour,

Je m'appelle Kamini et je suis responsable marketing chez Fit in Shoe. Nous sommes spécialisés dans la fourniture de chaussures de haute qualité adaptées à divers besoins professionnels et personnels. Je souhaiterais discuter de nos derniers échantillons de chaussures qui pourraient intéresser votre entreprise et fixer un rendez-vous pour en parler plus en détail.

Pourriez-vous s'il vous plaît me fournir l'adresse e-mail de la personne responsable des ressources humaines ou de l'achat chez vous ? Cela me permettrait de lui envoyer plus d'informations et de convenir d'une date pour un rendez-vous.